



FORTUNE & COATES

The People's Estate Agent



FORTUNE & COATES



12 Whieldon Grange, Harlow, CM17 9WG

Guide price £650,000

Guide Price: £650,000 - £675,000

Fortune and Coates are delighted to offer to the market this spacious four-bedroom detached family home situated in the location of Whieldon Grange, Church Langley.

Upon entering, you are welcomed into a bright entrance hallway with stairs rising to the first floor, a useful storage cupboard and access to a convenient ground floor W/C.

The living room is a beautifully presented and inviting space, flooded with natural light from dual aspects. A feature fireplace provides a cosy focal point, while ample space for both relaxing and entertaining makes this an ideal family room. The room seamlessly connects to the dining area, creating the perfect space for entertaining

Living room 11'6" x 19'3" (3.52 x 5.87)

Kitchen 15'1" x 10'5" (4.62 x 3.20)

Dining area 11'6" x 9'6" (3.52 x 2.92)

Utility room 7'8" x 12'4" (2.35 x 3.77)

Garage 7'8" x 3'9" (2.35 x 1.15)

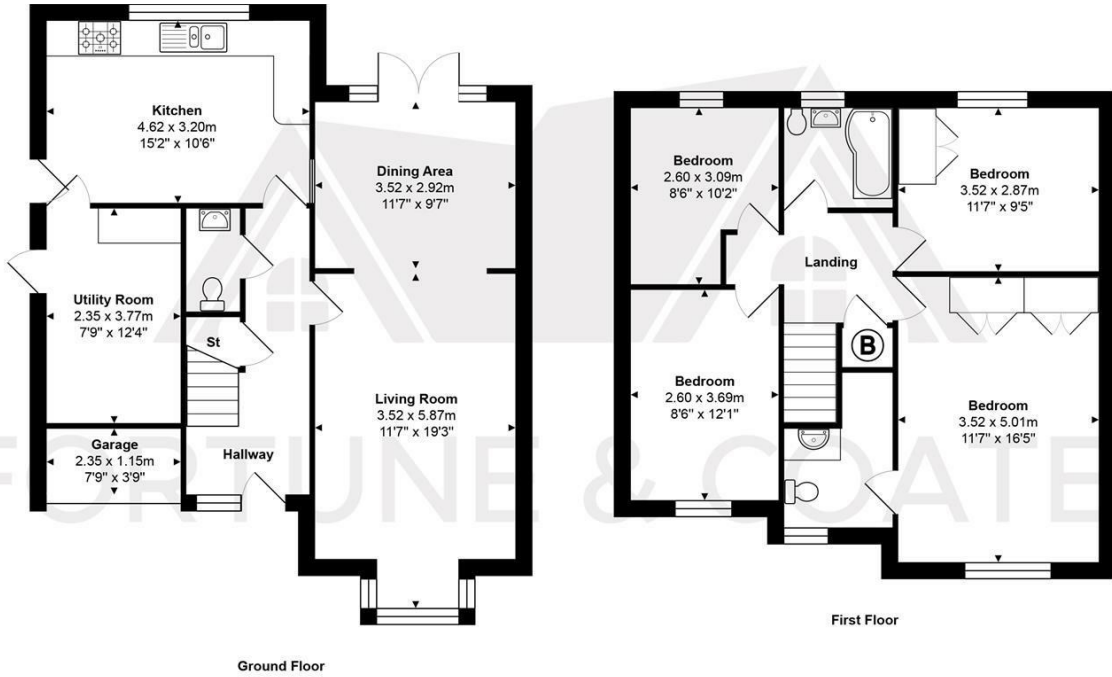
Bedroom 11'6" x 16'5" (3.52 x 5.01)

Bedroom 11'6" x 9'4" (3.52 x 2.87)

Bedroom 8'6" x 12'1" (2.60 x 3.69)

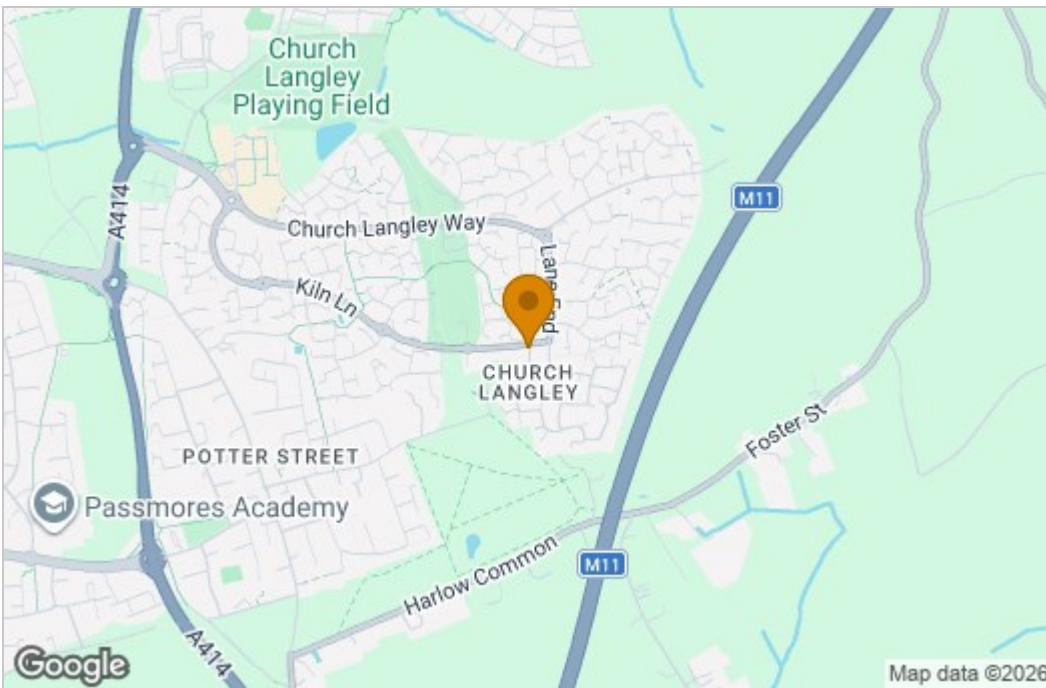
Bedroom 8'6" x 10'1" (2.60 x 3.09)

Floor Plan

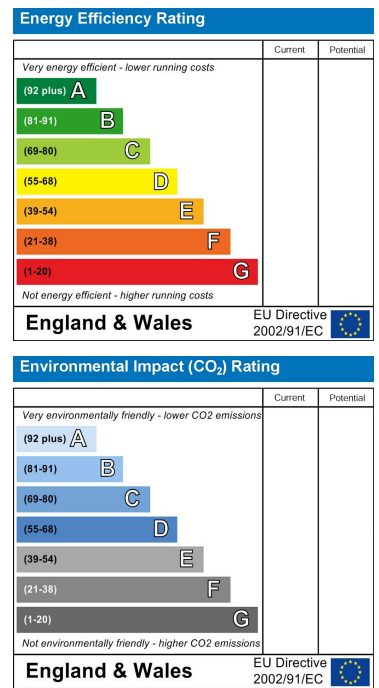


Total Area: approx. 130.1 m² ... 1400 ft²
 THE FLOORPLAN IS FOR ILLUSTRATIVE PURPOSES ONLY AND IS NOT TO SCALE.
 Measurements and features are approximate and may differ from the actual property. Verify all details independently; no liability is accepted for errors or omissions.
 Property marketing provided by www.fotomarketing.co.uk

Area Map



Energy Efficiency Graph



These particulars, whilst believed to be accurate are set out as a general outline only for guidance and do not constitute any part of an offer or contract. Intending purchasers should not rely on them as statements of representation of fact, but must satisfy themselves by inspection or otherwise as to their accuracy. No person in this firm's employment has the authority to make or give any representation or warranty in respect of the property.